



## COURSE OVERVIEW

Unleash your creativity and step into the world of professional nail enhancement. Our Nail Technician Program is designed for individuals who are passionate about nails and artistic expression. This course equips you with the hands-on abilities and theoretical understanding needed to design, sculpt, and perfect a wide range of nail enhancements.

Throughout your training, you'll gain confidence working with industry-standard tools, materials, and techniques, while developing a strong foundation for professional practice. You'll also explore a variety of creative mediums used in modern nail artistry.

Whether you dream of joining an established salon or launching your own freelance business, this program sets you on the path toward a rewarding career.

Key skills and techniques covered include:

- Acrylic nail enhancements
- Gel nail enhancements
- Dip powder system
- Electric file
- Custom nail artistry, design, and advanced decoration

This program serves as an ideal entry point into the nail industry, giving you the practical experience and knowledge required to work confidently and creatively. Graduates are prepared for employment in nail studios, beauty salons, spa environments, or to build their own clientele as an independent nail professional.

 waacademyperth  waacademy

## COURSE FEES & PAYMENT OPTIONS

### Payment Plan \$4,000

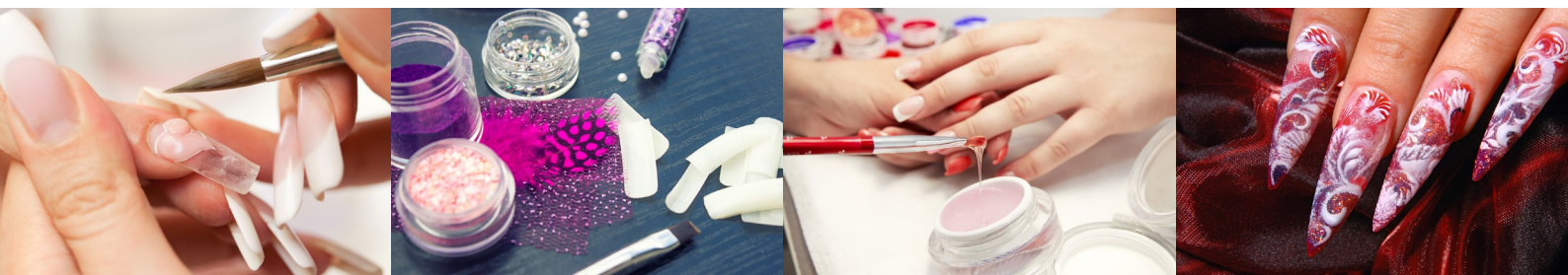
Payment Plan \$4,000 (\$500 deposit upon enrolment and balance paid by direct debit on a payment plan; 11 fortnightly instalments of \$318.18; please allow a \$2.30 admin fee and \$11.00 account set-up fee)

Included in course fees: all products, equipment, learner guides required to complete this qualification unless mentioned under the Additional Fees section.

## CAREER OUTCOMES

Successful completion of this program leads to exciting career opportunities in the nail and beauty industry. Graduates from the Nail Technician Program are able to gain employment as:

- Freelance Nail Technician
- Nail Artist
- Nail Specialist working in a salon





### STUDY MODE & ADDITIONAL STUDY/TRAINING

#### PART TIME – 22 WEEKS ON CAMPUS (1 DAY PER WEEK)

Approximately 6 additional hours per week is to be completed off-campus to complete prescribed reading of learner guides and workbook activities, and to complete theory assessments consisting of knowledge questions for each unit.

### ENTRY REQUIREMENTS

There are no formal entry requirements for this course, other than a minimum age requirement of 15 years of age.

Language, Literacy and Numeracy (LLN) Assessment: As a requirement of the student entry procedure, students may have to undertake a Language Literacy and Numeracy (LLN) assessment. This is assessed on a case-by-case scenario.

### STUDENT REQUIREMENTS & ADDITIONAL FEES

- WA Academy uniform t-shirt to be worn with black professional pants and black enclosed shoes.
- General stationery and a padlock for use of the lockers.
- Students are required to supply models for all practical assessments to demonstrate their technical skills.
- The Training Package stipulates that all practical assessments must be performed on a variety of models.
- Models are also required to pay the model assessment fee charge as assessments must be performed on a paying client.

### COURSE START DATES

Please contact WA Academy on [info@waacademy.com](mailto:info@waacademy.com) or 08 9356 2279 for the current course timetables.

### FURTHER STUDY PATHWAYS

Nail Technician Program may also be utilised as a stepping stone to higher qualifications. Suggested higher qualifications include:

SHB30321	Certificate III in Nail Technology
SHB30121	Certificate III in Beauty Services
SHB40121	Certificate IV in Beauty Therapy
SHB50121	Diploma of Beauty Therapy

On successful completion of the units listed below you will receive your Nationally Recognised Statement of Attainment for Nail Technician Program.

### UNITS

SHBBNLS009*	Apply acrylic nail enhancements
SHBBNLS010*	Apply nail art
SHBBNLS011	Use electric file equipment for nail services
SHBBNLS012	Apply advanced nail art
SHBBNLS008*	Apply gel and dip powder nail enhancements

Delivery is undertaken in a simulated salon environment. All assessments must be undertaken and deemed competent before any statements can be issued. Assessment is undertaken on a continuous basis throughout the course. Assessment methods may include a combination of the following: practical assessment, theory assessment, role play, case studies, assignments, portfolios and log books.