

UNIT OVERVIEW

SHBBFAS005 Provide Facial Treatments and Skin Care Recommendations delivers the skills and knowledge required to provide facial treatments and recommend appropriate skin care products. This unit will teach you how to establish client priorities during consultation and treatment, synthesise knowledge of cosmetic chemistry and nutrition, and to design and provide facial routines and advice on products and protection of facial skin.

What you will learn:

- Client consultation
- Contra-indications to facial treatments
- Skin analysis and diagnosis
- Designing and recommending facial treatment plans
- Prepare for facial treatments
- Providing facial treatments including cleansing, exfoliation, extractions, facial massage and application of specialised products
- Selecting appropriate products
- Aftercare advice, treatment and recommendations
- Health, hygiene and safety for therapist and client

This unit also includes the delivery of SHBBINF002 Maintain infection control standards. On successful completion you will receive a Statement of Attainment for SHBBFAS005 Provide facial treatments and skin care recommendations & SHBBINF002 Maintain infection control standards in partial completion of a SHB40121 Certificate IV in Beauty Therapy. This unit can be used as a stepping stone to a beauty therapy qualification.

UNIT FEES & PAYMENT OPTIONS

Payment in Full \$1,500 | Payment Plan \$1,650

Payment in Full \$1,500 (\$300 deposit upon enrolment and balance of \$1,200 to be paid prior to course commencement.

Payment Plan \$1,650 (\$300 deposit upon enrolment and balance paid by direct debit on a payment plan; 5 fortnightly instalments of \$270; please allow a \$2.30 admin fee and \$11.00 account set-up fee)

Included in course fees: all products, equipment, learner guides required to complete this qualification unless mentioned under the Additional Fees section.

STUDY MODE & ADDITIONAL STUDY/TRAINING

Part time – 10 weeks on campus (1 day per week)

This unit includes 38 hours completed during clinic days within the 10-week course duration.

An additional 4 weeks on campus (1 day per week) is required prior to undertaking this unit to complete the prerequisite units Incorporate knowledge of skin structure and functions into beauty therapy, incorporate knowledge of body structures and functions into beauty therapy & Promote healthy nutritional options in a beauty therapy context.

Approximately 10 additional hours is to be completed off-campus to complete prescribed reading of learner guides and workbook activities, and to complete theory assessments consisting of knowledge questions.

ENTRY REQUIREMENTS

Completion of SHBBSSC001 Incorporate knowledge of skin structure and functions into beauty therapy, SHBBSSC002 Incorporate knowledge of body structures and functions into beauty therapy & SHBXCCS006 Promote healthy nutritional options in a beauty therapy context must be completed prior to undertaking this unit.

A minimum age requirement of 15 years of age is required to enrol into this unit.

Language, Literacy and Numeracy (LLN) Assessment: As a requirement of the student entry procedure, students may have to undertake a Language Literacy and Numeracy (LLN) assessment. This is assessed on a case-by-case scenario.

STUDENT REQUIREMENTS & ADDITIONAL FEES

- WA Academy beauty uniform t-shirt to be worn with black professional pants and black enclosed shoes.
- Student will be required to supply a towelling body wrap & headband.
- General stationary and a padlock for use of the lockers.
- Students are required to supply models for all practical assessments to demonstrate their technical skills.
- The Training Package stipulates that all practical assessments must be performed on a variety of models.
- Models are required to pay the model assessment fee charge as assessments must be performed on paying clients.

COURSE START DATES

Please contact WA Academy on info@waacademy.com or **08 9356 2269** for the current course timetables



PACKAGE DEAL

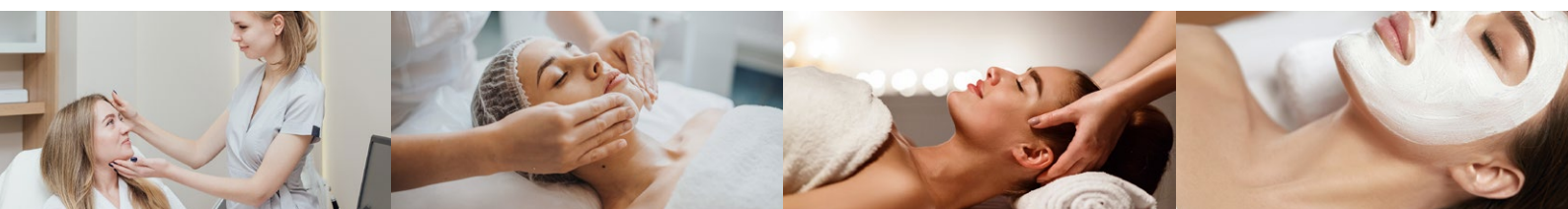
Are you considering enrolling into multiple courses?
Why not choose a package deal and save \$\$\$

Incorporate Knowledge of Skin & Body Structures Prerequisite units, Provide Facial Treatments and Skin Care Recommendations & Provide Specialised Facial Treatments

Payment in Full: **\$1,900 (Save \$900)**

Payment Plan: **\$2,150 (Save \$900)**

 [waacademyperth](https://www.instagram.com/waacademyperth)  [waacademy](https://www.facebook.com/waacademy)



UNIT OVERVIEW

SHBBFAS006 Provide Specialised Facial Treatments delivers the skills and knowledge required to provide specialised facial treatments incorporating the use of ultrasonic, galvanic and direct current devices, as well as micro-dermabrasion treatments. This unit will teach you how to establish priorities with clients and apply knowledge of electrical machines and cosmetic products, and to design and provide treatments to address specific skin types and conditions.

What you will learn:

- Designing and recommending specialised facial treatment plans
- Designing and recommending micro-dermabrasion treatments
- Prepare for specialised facial treatments including micro-dermabrasion
- Cleansing skin using ultrasonic and direct current
- Remove minor skin blemishes and infuse serums
- Application of basic peels
- Selecting appropriate products
- Application of specialised products
- Aftercare advice, treatment and recommendations
- Health, hygiene and safety for therapist and client

This unit also includes the delivery of SHBXCCS005 Maintain health and wellbeing in a personal service setting and SHBBSKS009 Provide micro-dermabrasion treatments.

On successful completion you will receive a Statement of Attainment for SHBBFAS006 Provide specialised facial treatments, SHBXCCS005 Maintain health and wellbeing in a personal service setting and SHBBSKS009 Provide micro-dermabrasion treatments in partial completion of a SHB40121 Certificate IV in Beauty Therapy. This unit can be used as a stepping stone to a beauty therapy qualification.

UNIT FEES & PAYMENT OPTIONS

Payment in Full \$900 | Payment Plan \$1,000

Payment in Full \$900 (\$300 deposit upon enrolment and balance of \$600 to be paid prior to course commencement.

Payment Plan \$1,000 (\$300 deposit upon enrolment and balance paid by direct debit on a payment plan; 3 fortnightly instalments of \$233.33; please allow a \$2.30 admin fee and \$11.00 account set-up fee)

Included in course fees: all products, equipment, learner guides required to complete this qualification unless mentioned under the Additional Fees section.

STUDY MODE & ADDITIONAL STUDY/TRAINING

Part time – 6 weeks on campus (1 day per week)

Approximately 8 additional hours per week is to be completed off-campus to complete prescribed reading of learner guides and workbook activities, and to complete theory assessments consisting of knowledge questions.

ENTRY REQUIREMENTS

Completion of SHBBSSC001 Incorporate knowledge of skin structure and functions into beauty therapy, SHBBSSC002 Incorporate knowledge of body structures and functions into beauty therapy, SHBXCCS006 Promote healthy nutritional options in a beauty therapy context, SHBBFAS005 Provide facial treatments and skin care recommendations & SHBBINF002 Maintain infection control standards must be completed prior to undertaking this unit.

A minimum age requirement of 15 years of age is required to enrol into this unit.

Language, Literacy and Numeracy (LLN) Assessment: As a requirement of the student entry procedure, students may have to undertake a Language Literacy and Numeracy (LLN) assessment. This is assessed on a case-by-case scenario.

STUDENT REQUIREMENTS & ADDITIONAL FEES

- WA Academy beauty uniform t-shirt to be worn with black professional pants and black enclosed shoes.
- Student will be required to supply a towelling body wrap & headband.
- General stationary and a padlock for use of the lockers.
- Students are required to supply models for all practical assessments to demonstrate their technical skills.
- The Training Package stipulates that all practical assessments must be performed on a variety of models.
- Models are required to pay the model assessment fee charge as assessments must be performed on paying clients.

COURSE START DATES

Please contact WA Academy on info@waacademy.com or **08 9356 2269** for the current course timetables

PACKAGE DEAL

Are you considering enrolling into multiple courses?
Why not choose a package deal and save \$\$\$

Incorporate Knowledge of Skin & Body Structures Prerequisite units, Provide Facial Treatments and Skin Care Recommendations & Provide Specialised Facial Treatments

Payment in Full: \$1,900 (**Save \$900**)

Payment Plan: \$2,150 (**Save \$900**)

 [waacademyperth](https://www.instagram.com/waacademyperth)  [waacademy](https://www.facebook.com/waacademy)

