



## COURSE OVERVIEW

SHB30416 Certificate III in Hairdressing is designed for aspiring hairdressers who are ready to turn their passion into a creative and rewarding career. This qualification is designed to provide students with the practical skills and knowledge to enable you to work as a qualified hairdresser and make you a cut above the rest.

You will develop a range of comprehensive practical skills and valuable industry knowledge that is used in hairdressing salons by qualified hairdressers. You will learn a core set of skills including:

- Shampoo and basin services
- Colour and lighten hair
- Cut hair using scissors and clippers
- Style and finish hair
- Highlighting
- Straighten, relax and volumize hair with chemical treatments
- Safe hygiene and work practices

In addition to a blend of theory based learning and practical hands-on practice, students participate in a simulated salon environment to assist and guide you towards becoming a skilled and confident professional in your new chosen field.

 waacademypertth  waacademy

## CAREER OUTCOMES

Successful completion of this qualification leads to exciting career opportunities in the hairdressing industry. Graduates from SHB30416 Certificate III in Hairdressing are able to gain employment as:

- Qualified Hairdresser
- Senior Stylist
- Barber
- Freelance hairdresser
- Salon owner or manager
- Session Stylist in the fashion and film industry
- Creative & Artistic Director
- Technical or Sales Advisor

## PATHWAYS OF STUDY OPTIONS

### APPRENTICESHIP PATHWAY

Apprenticeships are suited to people who want to combine hands-on learning in a salon environment with a slower pace of practical and theoretical study. Choosing this path means you'll learn on the job, under the guidance of an employer, and attend a formal training academy one day per week with an RTO such as WA Academy.

### ACCELERATED LEARNING PATHWAY

This fast track course is comprehensive, taking just 1 year to become qualified and ready for work. You'll learn theory and practical hairdressing skills under the guidance of expert trainers. Our graduates enjoy a range of career opportunities after completing their qualification, including employment in salons, entrepreneurship by starting their own home-based businesses, or exploring various paths within the hairdressing industry to align with their passions and aspirations

## COURSE FEES & PAYMENT OPTIONS

### APPRENTICESHIP PATHWAY

Please refer to the current Fees & Charges schedule. Payment can also be paid in full or on a payment plan throughout the course duration.

If you are planning on enrolling and studying under the government funded option of this qualification please note the following: Student tuition fees are indicative only and are subject to change given individual circumstances at enrolment. Each year the Government of Western Australia Department of Training and Workforce Development issue the VET FEES AND CHARGES POLICY that Registered Training Organisations such as WA Academy are required to adhere to, if you are studying under the government funded option of this qualification.

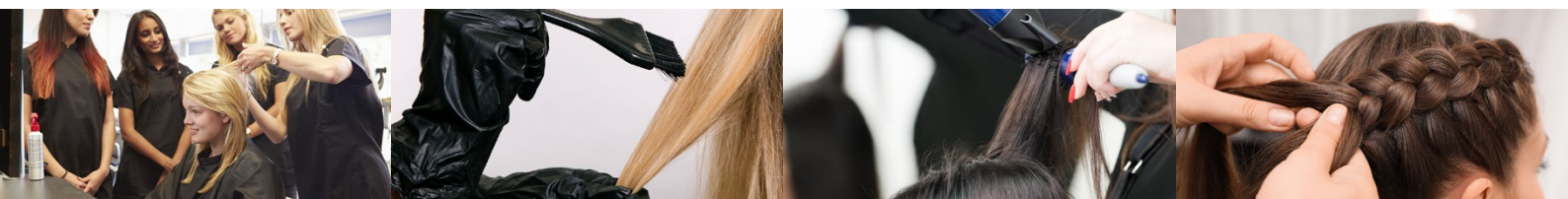
### ACCELERATED LEARNING PATHWAY

**Course Fee: \$19,000**

**Payment Plan: \$19,000**

Payment Plan: \$1500 deposit upon enrolment and balance paid by direct debit on a payment plan; 24 fortnightly instalments of \$729.16; please allow a \$2.30 admin fee and \$11.00 account set-up fee.

Included in course fees: all product and learner guides required to complete this qualification unless mentioned under the Additional Fees section.





## STUDY MODE & ADDITIONAL STUDY/TRAINING

### APPRENTICESHIP PATHWAY

- 2 years of study over your 3 year apprenticeship contract
- Student attends campus 1 day per week
- Student must be indentured to a hairdressing salon prior to commencing SHB30416 Certificate III in Hairdressing.
- Combines paid on-the-job training and structured formal training with a Registered Training Organisation (RTO).
- This training program is funded by the WA Department of Training and Workforce Development (DTWD). Please refer to the current Fees & Charges schedule for information on subsidised fees.

### ACCELERATED LEARNING PATHWAY

- 1 year full time study
- Student attends campus 3 days per week, 1 day of work experience in a salon each week and 1 day of home study.
- Full fee payable (fee for service program not subsidised by DTWD).

## ENTRY REQUIREMENTS

There are no formal entry requirements for this course, other than a minimum age requirement of 15 years of age. If the student is enrolling into the apprenticeship pathway, they must be indentured to a hairdressing salon prior to commencing SHB30416 Certificate III in Hairdressing.

Language, Literacy and Numeracy (LLN) Assessment: As a requirement of the student entry procedure, students may have to undertake a Language Literacy and Numeracy (LLN) assessment. This is assessed on a case-by-case scenario.

## STUDENT REQUIREMENTS & ADDITIONAL FEES

- WA Academy uniform t-shirt to be worn with black professional pants and black enclosed shoes.
- General stationery and a padlock for use of the lockers.
- Students are required to supply a full set of hairdressing equipment to undertake their training and purchase the textbooks required for delivery and assessment.
- Students are required to supply models for all practical assessments to demonstrate their technical skills.
- The Training Package stipulates that all practical assessments must be performed on a variety of models.
- Models are also required to pay the model assessment fee charge as assessments must be performed on a paying client.

## COURSE START DATES

Please contact WA Academy on [info@waacademy.com](mailto:info@waacademy.com) or 08 9356 2279 for the current course timetables.

On successful completion of the units listed below you will receive your Nationally Recognised qualification for SHB30416 Certificate III in Hairdressing.

## UNITS OF COMPETENCE

|             |  |
|-------------|--|
| BSBSUS201   | Participate in environmentally sustainable work practices                      |
| SHBHBAS001  | Provide shampoo and basin services   |
| SHBHCLS002  | Colour and lighten hair  |
| SHBHCLS003  | Provide full and partial head highlighting treatments                          |
| SHBHCLS004  | Neutralise unwanted colours and tones  |
| SHBHCLS005  | Provide on scalp full head and retouch bleach treatments                       |
| SHBHCUT001  | Design haircut structures  |
| SHBHCUT002  | Create one length and solid haircut structures                                 |
| SHBHCUT003  | Create graduated haircut structures  |
| SHBHCUT004  | Create layered haircut structures  |
| SHBHCUT005  | Cut hair using over-comb techniques  |
| SHBHDES003  | Create finished hair designs   |
| SHBHIND001  | Maintain and organise tools, equipment and work areas                          |
| SHBHIND003  | Develop and expand a client base   |
| SHBHREF002  | Straighten and relax hair with chemical treatments                             |
| SHBHTRI001  | Identify and treat hair and scalp conditions                                   |
| SHBXCCS001  | Conduct salon financial transactions   |
| SHBXCCS002  | Provide salon services to clients  |
| SHBHXIND001 | Comply with organisational requirements within a personal services environment |
| SHBXIND002  | Communicate as part of a salon team  |
| SHBXWHS001  | Apply safe hygiene, health and work practices                                  |
| SHBHCUT006  | Create combined haircut structures   |
| SHBHCUT007  | Create combined traditional and classic men's haircut structures               |
| SHBHDES004  | Create classic long hair up-styles   |
| SHBHBAS002  | Provide head, neck and shoulder massages for relaxation                        |
| SHBHCUT011  | Design and maintain beards and moustaches                                      |
| SHBHREF001  | Curl and volumise hair with chemical treatments                                |
| SIRRINV001  | Receive and handle retail stock  |

Delivery is undertaken in a simulated salon environment. All assessments must be undertaken and deemed competent before any qualifications can be issued. Assessment is undertaken on a continuous basis throughout the course. Assessment methods may include a combination of the following: practical assessment, theory assessment, role play, case studies, assignments, portfolios and log books.